

**CITY OF FREEPORT
PLANNING COMMISSION
Tuesday, June 23, 2009, 6:00 p.m.
Freeport Police Department, Municipal Court Room
430 North Brazosport Boulevard
Freeport, Texas**

AGENDA

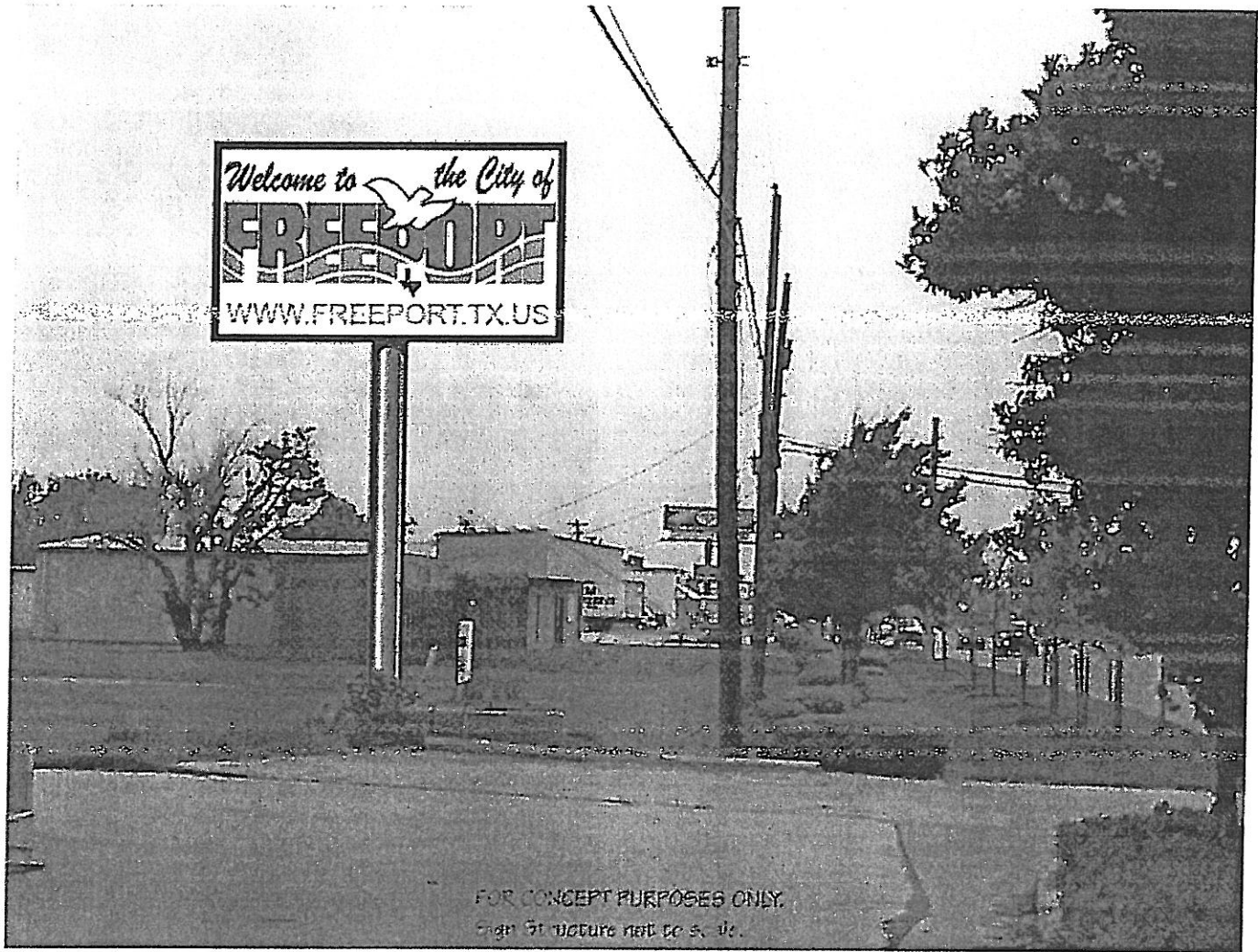
*Diane Williams, Chairperson
Alonzo Martinez
Joyce Adkins*

*Eric Hayes
Roberto Caceres
Rueben Cuellar*

NOTICE is hereby given that the Planning Commission of the City of Freeport, Texas will meet in a regularly scheduled meeting on **Tuesday, June 23, 2009 at 6:00 P.M.** at the Freeport Police Department Municipal Courtroom, 430 North Brazosport Boulevard, Freeport, Texas to discuss the following:

1. Open Meeting.
2. Invocation.
3. Approval of minutes for May 26, 2009.
4. Discuss/consider whether or not Mr. Eric Hayes should be allowed to erect a 14' X 24' LED sign at the entrance of his property located on the East side of Brazosport Boulevard (State Highway 228), being Lots Ninety-Two (92) and Ninety-Three (93). BCIC Division 14, A. Calvit League, Abstract Forty-Nine (49) and J. F. Fields Survey, Abstract Sixty-Two (62).
5. Discuss/consider whether or not Chapters 118 and 119 of the Code of Ordinances, regulating buses and taxicabs, respectively, should be amended to exclude vehicles operated by churches and other charitable organizations; and, if so, how should these amendments be worded.
6. Adjourn.

NOTE: ITEMS NOT NECESSARILY DISCUSSED IN THE ORDER THEY APPEAR ON THE AGENDA. THE PLANNING COMMISSION, AT ITS DISCRETION, MAY TAKE ACTION ON ANY OR ALL OF THE ITEMS LISTED.



OPTEC DISPLAYS, INC.

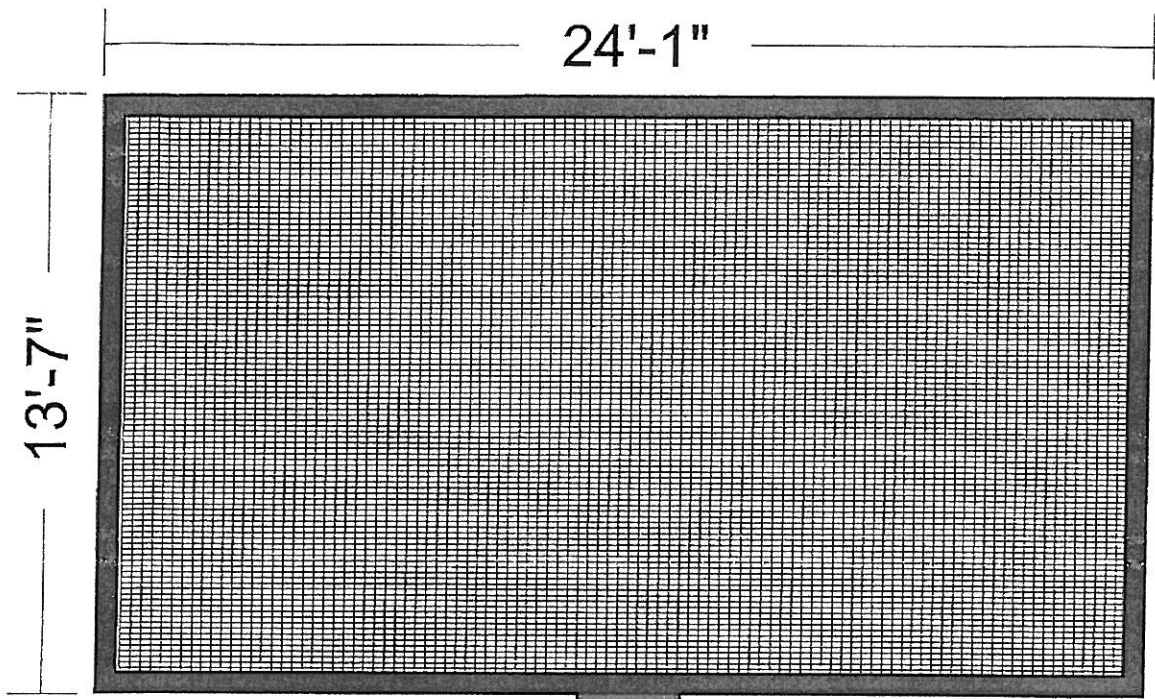
530 6th Avenue, City of Industry, CA 91746
 Tel: 800.876.1668 Fax: 626.369.7858

Project Name: Eric Hayes
 Prepared by: James Newkirk
 Texas Representative
 jnewkirk@optecdisplays.com
 818-519-0104

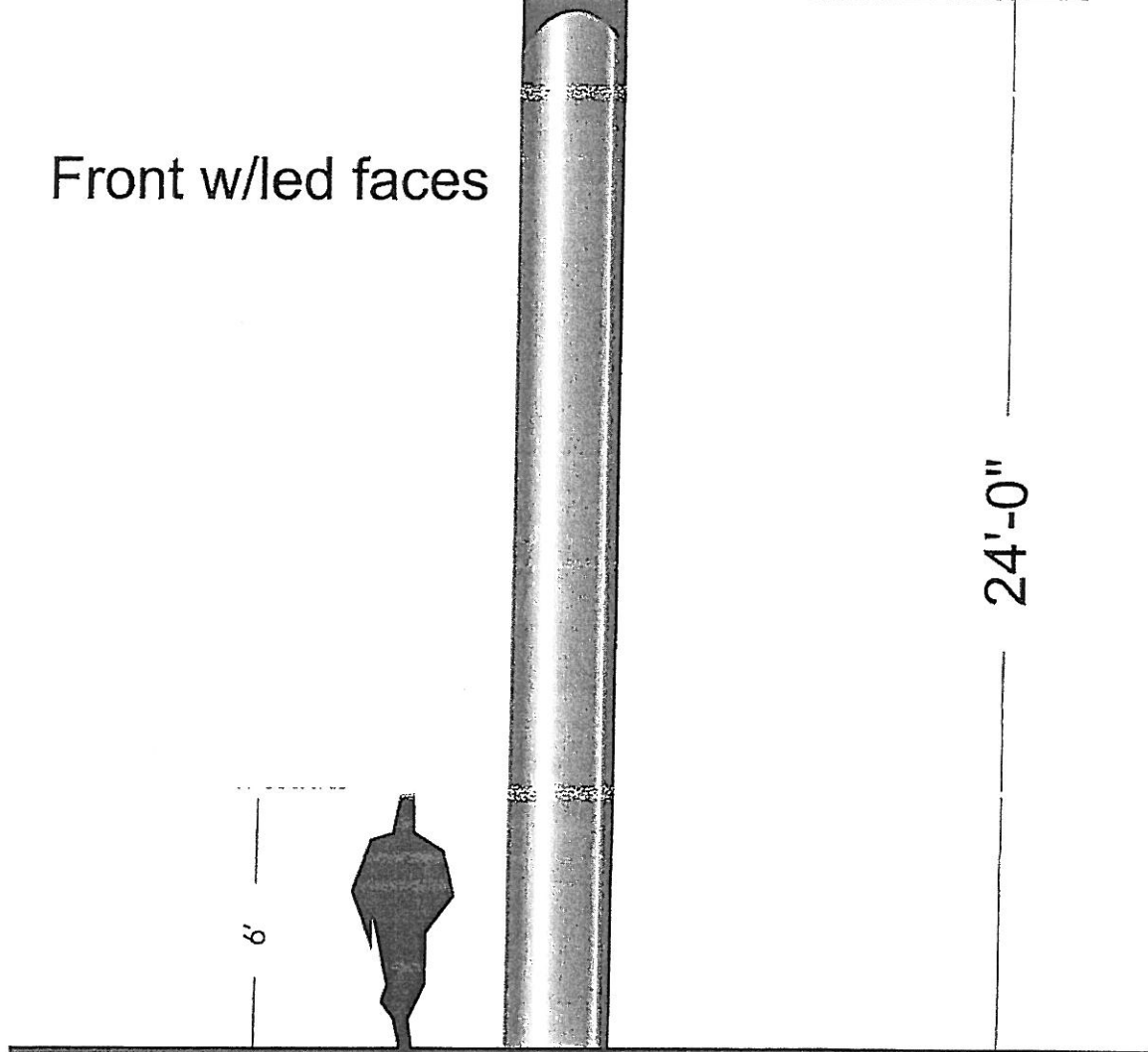
Model: 2040-5-RGB-Z-H-D
Matrix: 200 x 360

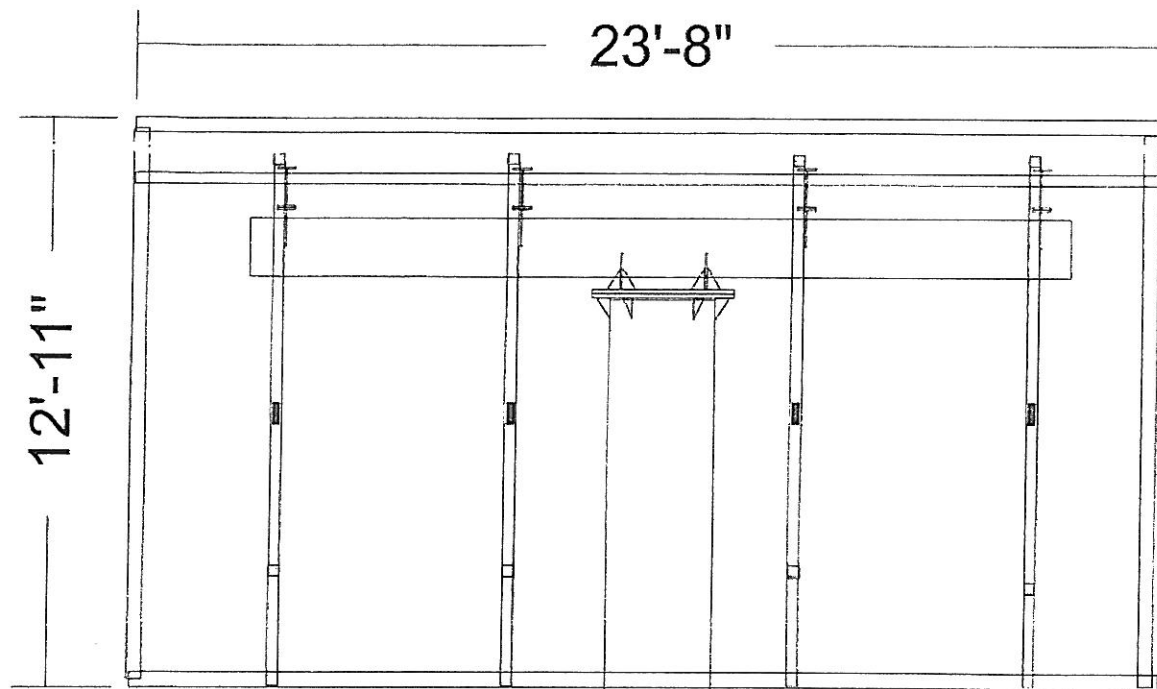
Display Specification

Color Processing: RGB 281 Trillion Levels
Character Size: 5.5 inches
Pixel Matrix: 200 x 360
Resolution: 72000 pixels per face
Cabinet Size: 13' 7 12/16" x 24' 1 12/16" x 9 7/16"
Display Area: 13' 1 8/16" x 23' 7 7/16"
Maintenance: Front

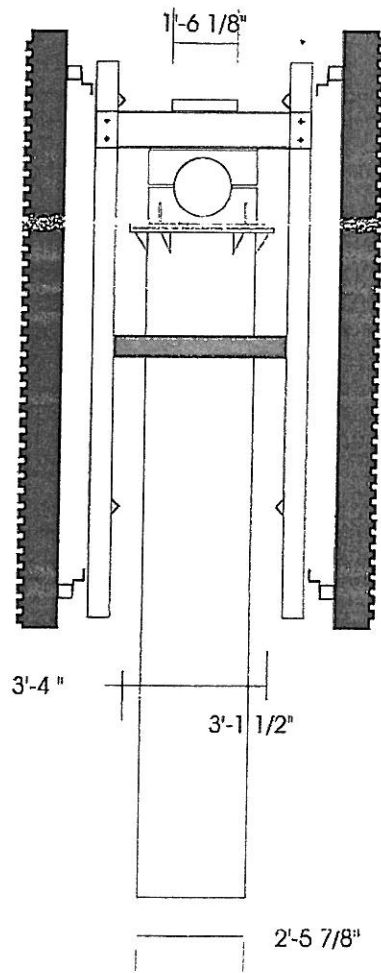


Front w/led faces

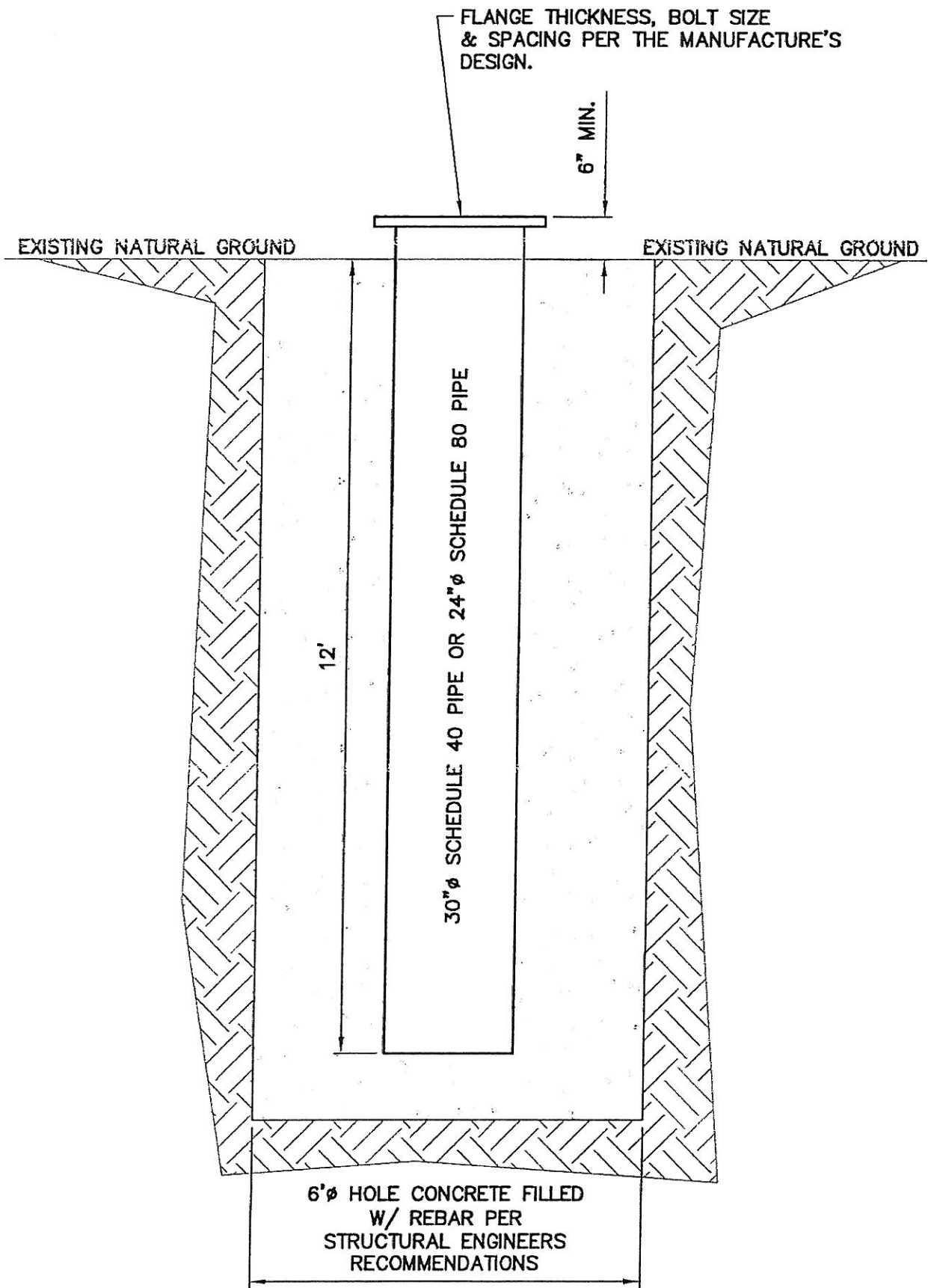




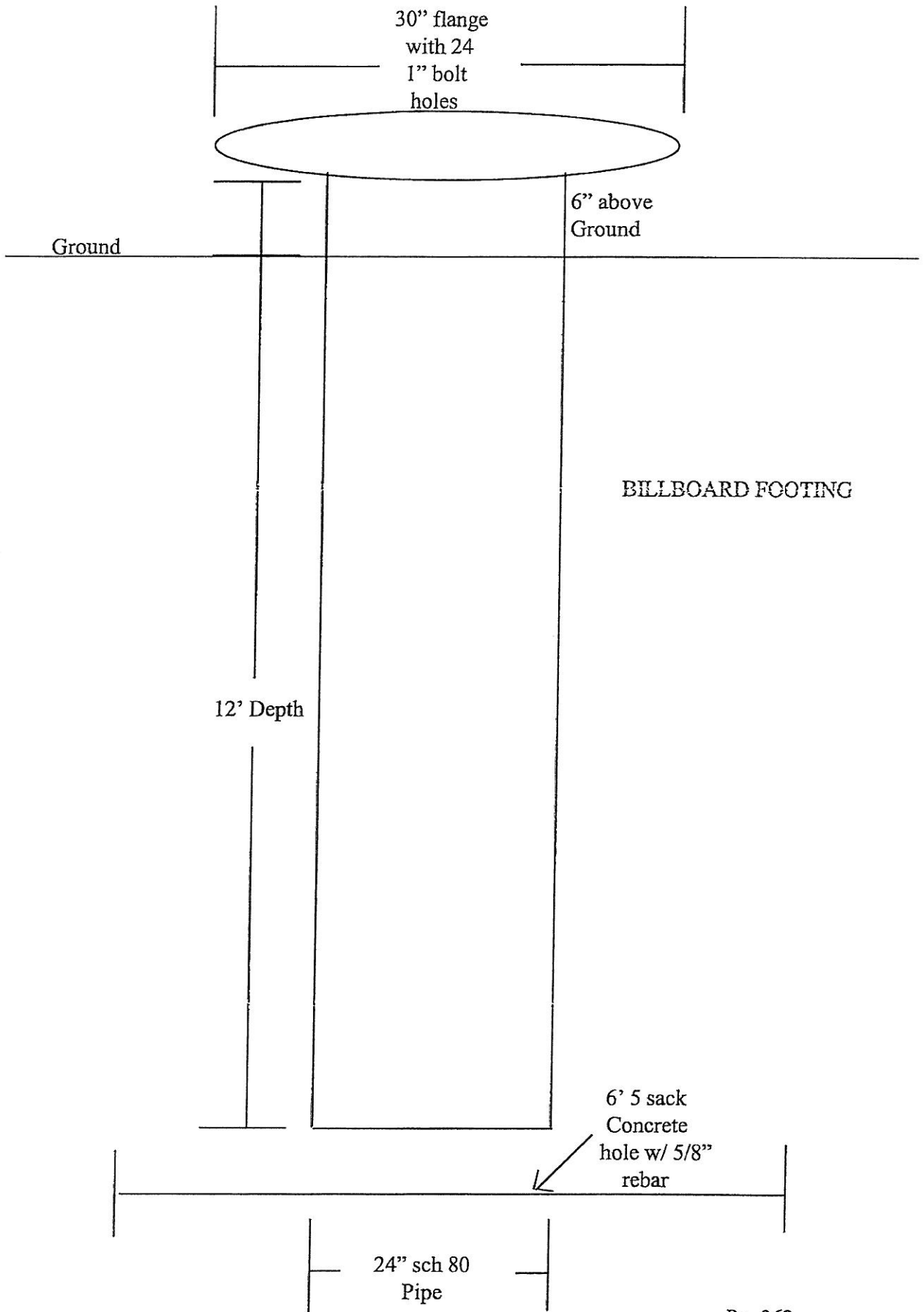
Front frame



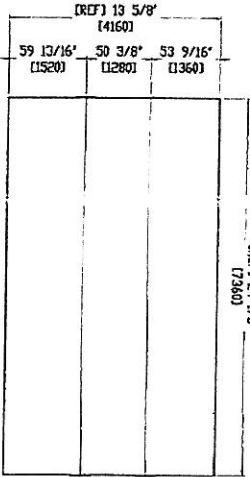
Side
Frame/ led Faces



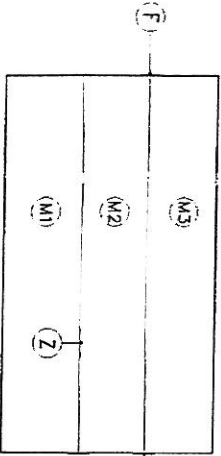
SIGN ANCHORING DETAIL
N.T.S.



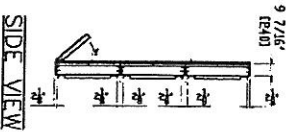
FINAL ASSEMBLY FRONT VIEW



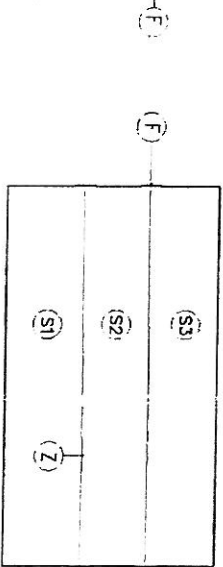
FRONT VIEW



MASTER ID



SIDE VIEW



SLAVE ID

SECTION	DISPLAY	APPROXIMATE WEIGHTS PER PANEL
M1	24X360	4000 lbs
M2	64X360	3200 lbs
M3	72X360	4000 lbs
S1	64X360	3200 lbs
S2	72X360	4000 lbs
S3	64X360	3200 lbs

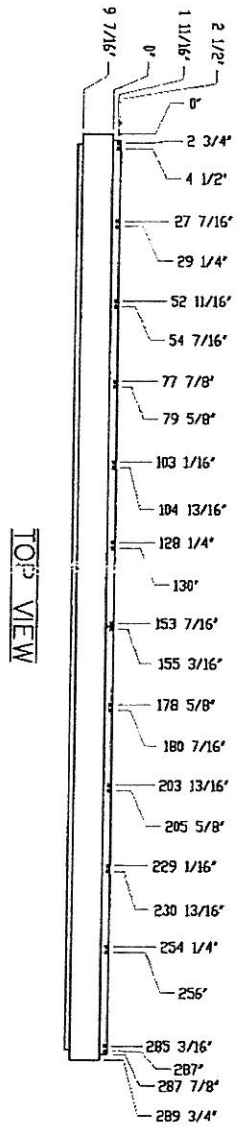
CALL OUT IDENTIFICATION TABLE
M1 DISPLAY SECTION M1 - SEE SECTION 1.1 DETAIL PAGE
M2 DISPLAY SECTION M2 - SEE SECTION 1.2 DETAIL PAGE
M3 DISPLAY SECTION M3 - SEE SECTION 1.3 DETAIL PAGE
S1 DISPLAY SECTION S1 - SEE SECTION 1.4 DETAIL PAGE
S2 DISPLAY SECTION S2 - SEE SECTION 1.5 DETAIL PAGE
S3 DISPLAY SECTION S3 - SEE SECTION 1.6 DETAIL PAGE
Z DISPLAY SECTION ALIGNMENT GUIDE - SEE DETAIL 1

- ALL DIMENSIONS ARE FIT-IN ALL-SHAPE UNIT WHEN PROVIDED AND IN LOWER
- UNLESS OTHERWISE SPECIFIED ALL EXTERIOR PARTS ARE FINISHED IN AN ALUMINUM CUSTOM COLOR WAS SPECIFIED AT TIME OF ORDER
- BACK PANEL FINISHED GRAY UNLESS CUSTOM COLOR WAS SPECIFIED AT TIME OF ORDER
- OPTIC DISPLAYS IS NOT RESPONSIBLE FOR THE MAIN ELECTRICAL DISCONNECT
- OPTIC DISPLAYS IS NOT RESPONSIBLE FOR THE MOUNTING HARDWARE OR THE INTEGRITY OF THE STRUCTURE TO WHICH THE DISPLAY IS MOUNTED
- DISPLAY MUST BE MOUNTED TO SUPPORTING STRUCTURE USING THE PROVIDED ANGLE FROM MOUNTING CLIPS
- DISPLAY IS REAR VENTILATED TO MAINTAIN WARRANTY COVERAGE. AIR MUST BE ALLOWED TO FLOW UNOBSTRUCTED FROM ALL AIR VENTS AND AMBIENT AIR TEMPERATURE ON ALL SURFACES MUST BE BETWEEN 22°F AND 131°F WHILE CUB IS POWERED FOR PROPER AIRFLOW. MAINTAIN MINIMUM 15" CLEARANCE BETWEEN BACK OF DISPLAY AND WALL.
- ADJACENT DISPLAY SECTION MUST BE MATED TOGETHER USING PROVIDED BUSHES AND WASHERS TO ENSURE PROPER ALIGNMENT AND FIT. SEE DETAIL 2
- BEFORE FINAL ATTACHMENT OF DISPLAY SECTIONS TO STRUCTURE CHECK FOR PROPER HORIZONTAL AND VERTICAL PIXEL ALIGNMENT
- DURING INSTALLMENT, THE BOTTOM OF THE DISPLAY MUST BE SUPPORTED AT EACH END AND ADDITIONAL SUPPORTS DISTRIBUTED ALONG LENGTH OF CABINET AT INTERVALS WILL TO EXCEED 5 FEET
- ELECTRICAL WIRING PROVIDED BY CUSTOMER TO BE INSTALLED IN INDIVIDUAL DISPLAY CABINET AND MAY NOT BE USED TO LIFT THE DISPLAY COMBINE WITH ANY ADDITIONAL STRUCTURES
- INSULATED DISPLAYS ARE NOT SHAPE ALWAYS SECURE SCOTCH TAPED AND UNCAVABLE DISPLAYS TO PROTECT ACCIDENTAL TIPPING BY WIND OR OTHER ELEMENTS NEVER OPERATIONAL SERVICE SHALL BE A DISPLAY UNLESS THE DISPLAY IS SECURED FROM TIPPING

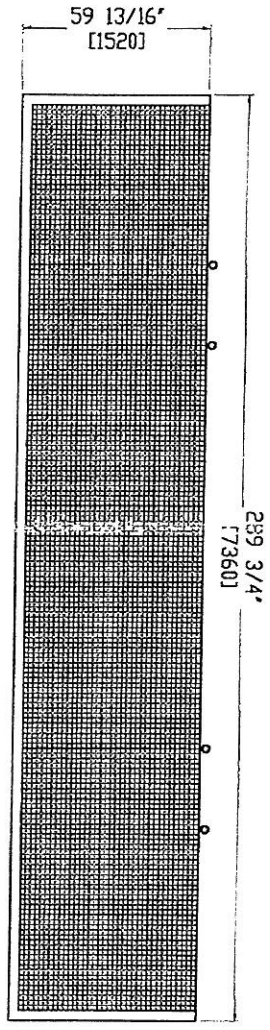
GENERAL NOTES

CORPORAL 2 6 PANEL DISPLAY BY A.S. OPTIC PRESERVE 1 (MANUFACTURED BY OPTIC)	MODEL: 1000 SERIAL: 1000
DATE: 10/11/10 REV: 0	DRAWN BY: 1000 CHECKED BY: 1000

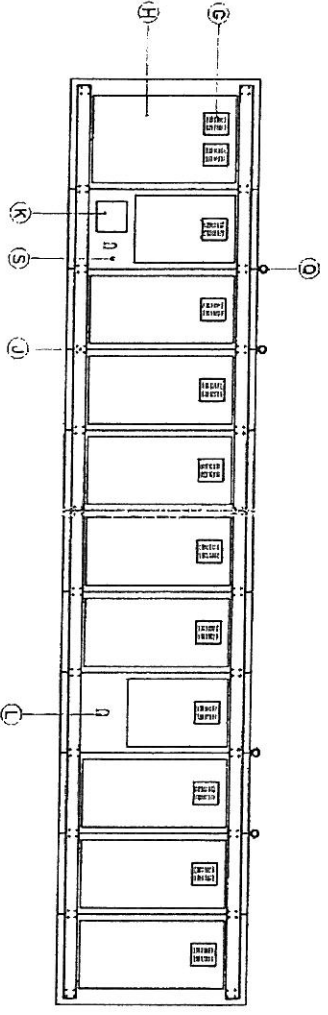
SECTION M1&S1 DETAIL



TOP VIEW



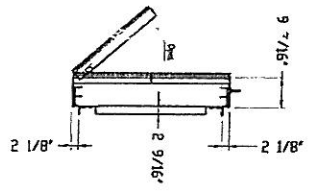
FRONT VIEW



REAR VIEW ID

GENERAL NOTES

- 1 ALL DIMENSIONS ARE FINISH/INSTALLATION UNLESS OTHERWISE NOTED.
- 2 DISPLAY PERIPHERY IS CONSTRUCTED OF ALUMINUM EXTRUSION, ALL OTHER PANELS ARE CONSTRUCTED OF STEEL OR ALUMINUM.
- 3 EYEBOLTS WHEN PROVIDED, MAY NOT BE USED FOR PERMANENT INSTALLATION.
- 4 ALL REAR ACCESS DOORS HINGE OPEN ON LEFT EDGE PROVIDE MINIMUM OF 2" CLEARANCE FROM ADDITIONAL STRUCTURES LEFT OF DOOR TO ALLOW DOOR TO OPEN COMPLETELY.
- 5 ALL FACE PANELS HINGE OPEN FROM BOTTOM TO TOP AND SLIDE OUT 6" FROM FRONT OF CABINET.



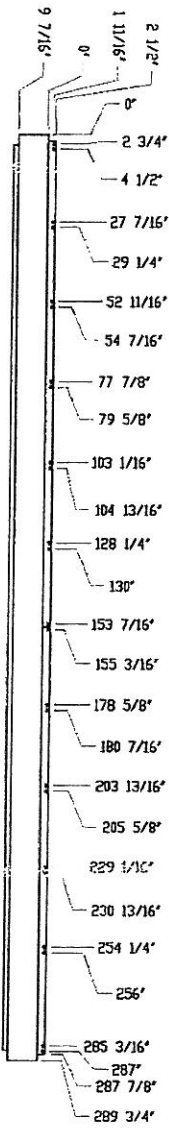
SIDE VIEW

CALL OUT IDENTIFICATION TABLE

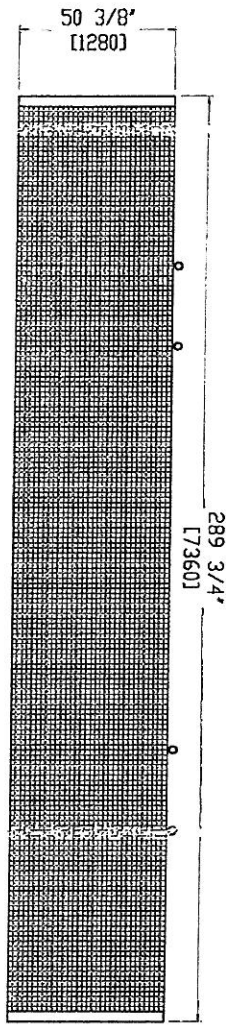
CALL OUT	DESCRIPTION
G	VENTILATION EXHAUST
H	REAR SERVICE ACCESS DOOR - SEE DETAIL
J	ANGLE IRON MOUNTING CLIP - SEE DETAIL
K	COMMUNICATIONS RELAY CENTER
L	ANGLE CONDUIT - SEE DETAIL
S	GROUNDING LUG
T	EYEBOLT - SEE DETAIL OF TOP INSTRUCTIONS

REV	DATE	DESCRIPTION	BY	APP
OPTEC				
COMMERCIAL DISPLAY DEPARTMENT REPAIR AND MAINTENANCE DIVISION DISTRIBUTION DEPARTMENT				
ORDER NUMBER	ORDER NUMBER	ORDER NUMBER	ORDER NUMBER	ORDER NUMBER
QUANTITY	QUANTITY	QUANTITY	QUANTITY	QUANTITY
DATE	DATE	DATE	DATE	DATE

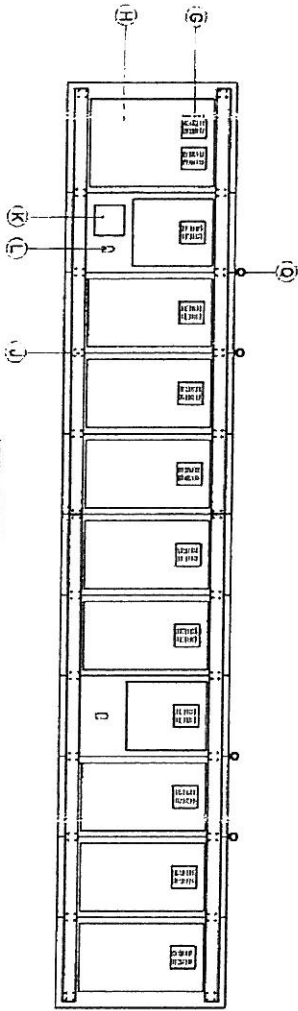
SECTION M2&S2 DETAIL



TOP VIEW



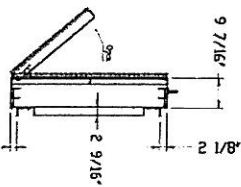
FRONT VIEW



REAR VIEW ID

GENERAL NOTES

- 1 ALL DIMENSIONS ARE FT. - ALTERNATE UNITS WILL BE PROVIDED AS NOTED
- 2 DISPLAY PERIPHERY IS CO-SUPPORTED BY ALUMINUM EXTRUSION ALL OTHER PANELS ARE CONSTRUCTED OF STEEL TO ALUMINUM
- 3 EYE BOLT - WHEN PROVIDED, MAY NOT BE USED FOR PERMANENT INSTALLATION
- 4 ALL REAR ACCESS DOORS - HINGE OPEN ON LEFT EDGE PROVIDE MINIMUM OF 2" CLEARANCE FROM ADDITIONAL STRUCTURES 1. FT OF DOOR TO ALLOW DOOR TO OPEN COMPLETELY
- 5 ALL FACE PANELS HINGE OPEN FROM BOTTOM TO -60° AND SLIDE OUT 6" FROM FRONT OF CABINET



SIDE VIEW

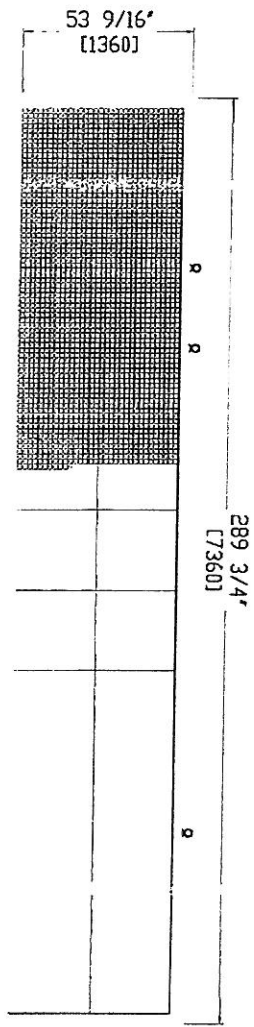
CALL OUT IDENTIFICATION TABLE

ITEM	DESCRIPTION
G	VENTILATION EXHAUST
H	REAR SERVICE ACCESS DOOR - SEE DETAIL J
J	ANGLE IRON MOUNTING CLIP - SEE DETAIL J
K	COMMUNICATIONS RELAY - SEE DETAIL J
L	ANGLE CONDUIT - SEE DETAIL J
O	EYE BOLT - SEE DETAIL J FOR INSTRUCTIONS

REV	DATE	DESCRIPTION	BY	APP'D

		OPTICONT 2000 PANEL DISPLAY, 312 4" X 312MM RESERVICED MANUFACTURED REPRODUCTION AVE DISTRIBUTION PROGRAM	
ORDER NO. 2000-5-EGR-2000-538-02 DRAWING NO. 2000-5-EGR-2000-538-02 REVISION 1	DATE: 11/11/00 DRAWN BY: J. W. H.	2000-5-EGR-2000-538-02 11/11/00 132 7 1/2 X 3 1/2	10

SECTION M3&S3 DETAIL



FRONT VIEW

SIDE VIEW

REAR VIEW ID

ITEM	CALL OUT IDENTIFICATION	DESCRIPTION
G		VENTILATION EXHAUST
H		REAR SERVICE ACCESS DOOR
J		ANGLE IRON MOUNTING CLIP - SEE DETAIL J
N		COMMUNICATIONS RELAY CENTER
T		ANGLE CONDUIT - SEE DETAIL T
Q		EXHIBIT - SEE DETAIL Q FOR INSTRUCTIONS