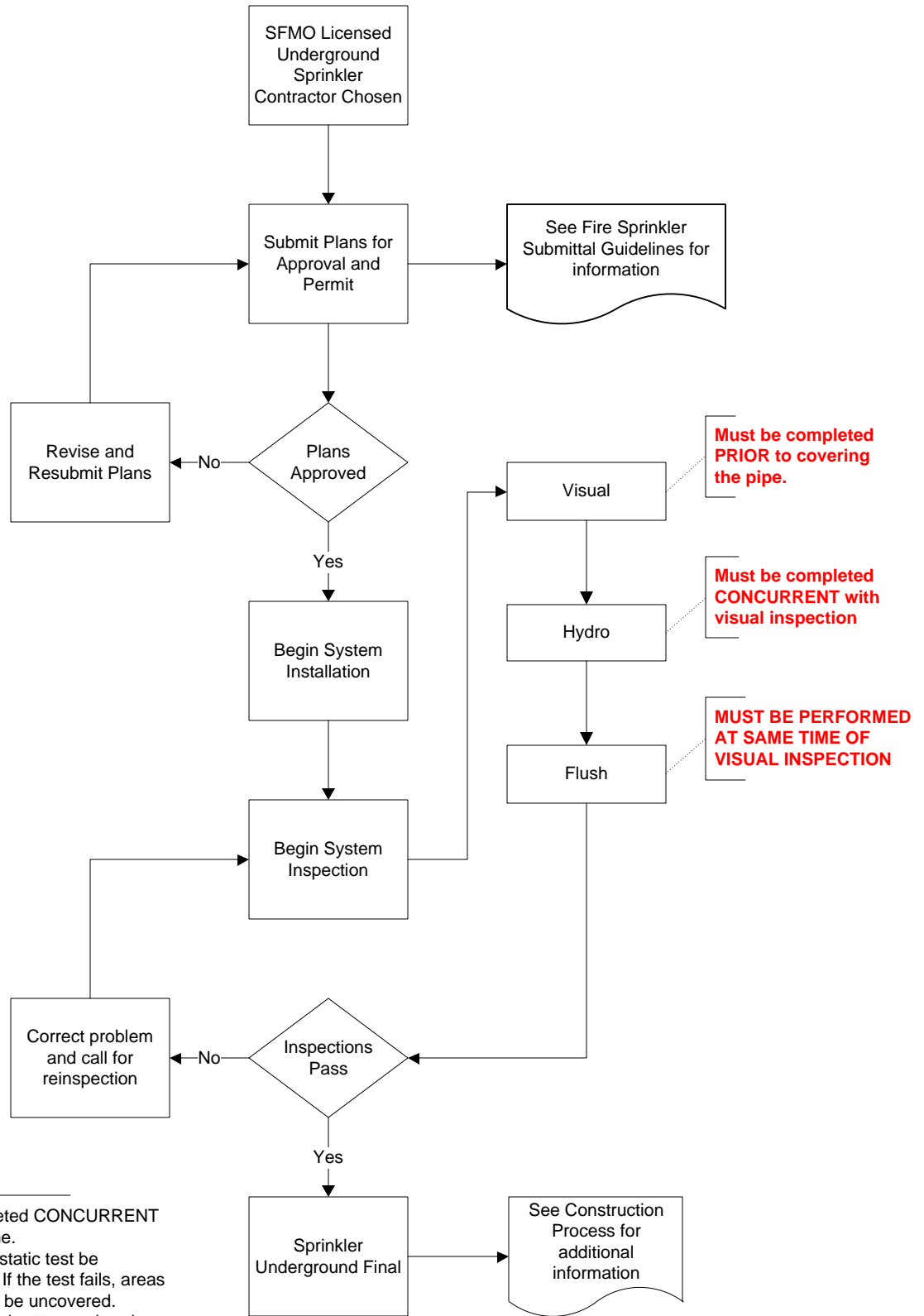


Fire Sprinkler Underground Process Flow



Oh, By The Ways...

1. Visual Inspection must be completed CONCURRENT with the flush of the underground line.
2. It is recommended that the hydrostatic test be completed prior to complete cover. If the test fails, areas already covered may be required to be uncovered.
3. Connection of the underground spigot to overhead riser prior to flushing, or "stacking the riser", may result in the overhead pipe being required to be flushed.