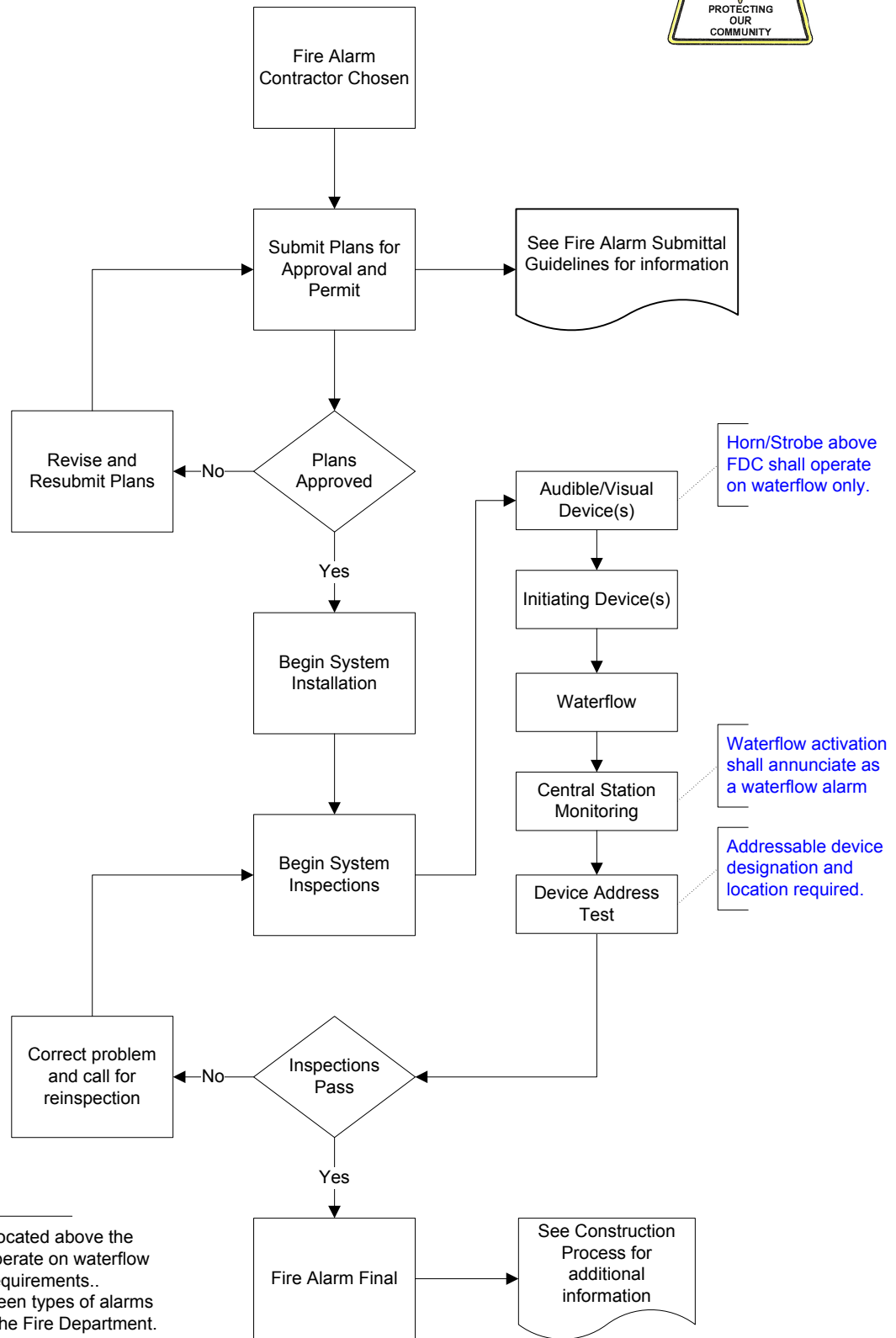


Fire Alarm Process Flow



Oh, By The Ways...

1. An exterior horn/strobe shall be located above the Fire Department Connection and operate on waterflow Only. See Fire Alarm Operation Requirements..
2. The CSM shall differentiate between types of alarms in a Point ID format acceptable to the Fire Department. "General Alarm" is not permitted. (waterflow alarm, smoke detector, pull station, etc...)